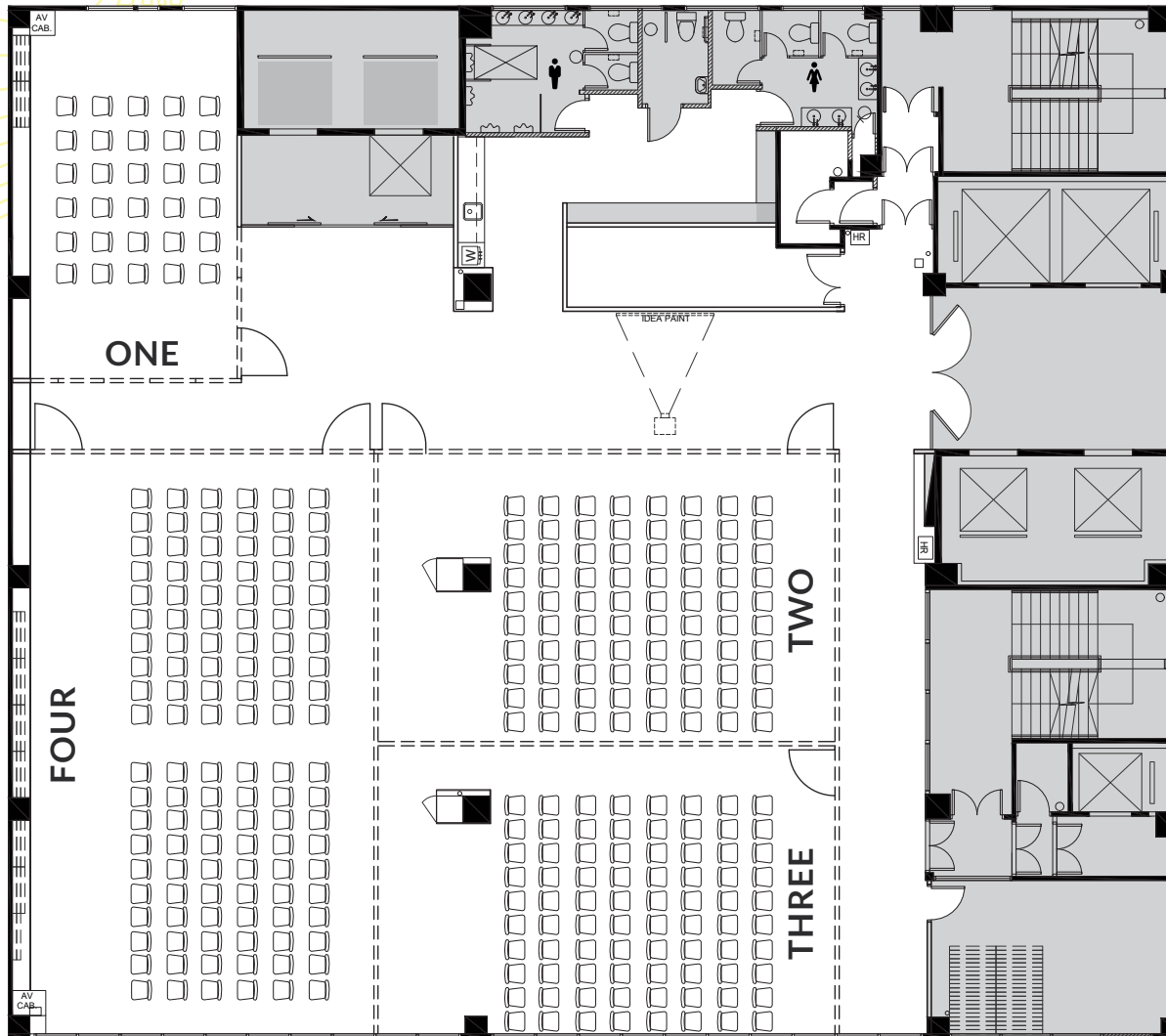


# 8F

## EVENT SPACE



### Floor information

- Category Event Space / Seminar
- Size around 3,500 sq.ft NET
- Ceiling Height 3,200mm

# 8F

## ROOM SETTING

	<u>Room Size</u>	<u>No.of tables included</u>	<u>No.of chairs included</u>
ONE	510 sq.ft.	10	30
TWO	820 sq.ft.	20	80
THREE	820 sq.ft.	20	80
FOUR	1,300sq.ft.	30	160

# 8F

## EVENT SPACE



### Monday-Friday

### Sat/Sun/Public Holiday

Type	Capacity	*HKD/hour	Monday-Friday		Sat/Sun/Public Holiday		
			0900 -1300/1400-1800	0900 -1800	*HKD/hour	0900 -1300/1400-1800	0900 -1800
			HKD/half day	HKD/day		HKD/half day	HKD/day
ONE	30 pax	800	2,900	6,200	960	3,500	7,500
TWO	80 pax	1,000	3,600	7,700	1,200	4,300	9,300
THREE	80 pax	1,000	3,600	7,700	1,200	4,300	9,300
FOUR	120 pax	1,500	5,400	12,000	1,800	6,500	14,500
Whole Floor	320+ pax	4,000	---	29,000	4,800	---	35,000

#### Items Included:

Air conditioning

One off setup

Lighting

Digital kiosk signage on G/F & 1/F

Wifi

Table & chair accordingly

\*Minimum 3 hours per booking  
Additional locker: HKD 10 per day

# ADD-ON SERVICES

## Standard Package

HKD 800/Day

2 x Microphones  
Reception Table  
Projector + Screen  
1 x Presenter Laser Pointer

## Additional Items/Day

Podium HKD 300  
Flipchart HKD 300  
Whiteboard HKD 300  
Spider Rack HKD 800  
2 x Microphones HKD 400  
Microphone Stand HKD 100  
Projector + Screen HKD 600  
PA system (Without Technician) HKD 3,000

Stage HKD 3,000  
-Setup Inclusive

Photo Booth  
-Standard HKD 2,000  
-Customized Design HKD 2,800

Backdrop Production HKD 3,000  
-Setup & Dismantle Inclusive  
-Spider Rack Inclusive

Table & Chair Upon Request  
Visual Design Upon Request  
Facade TV Air Time Upon Request  
Refreshment / Catering Upon Request

